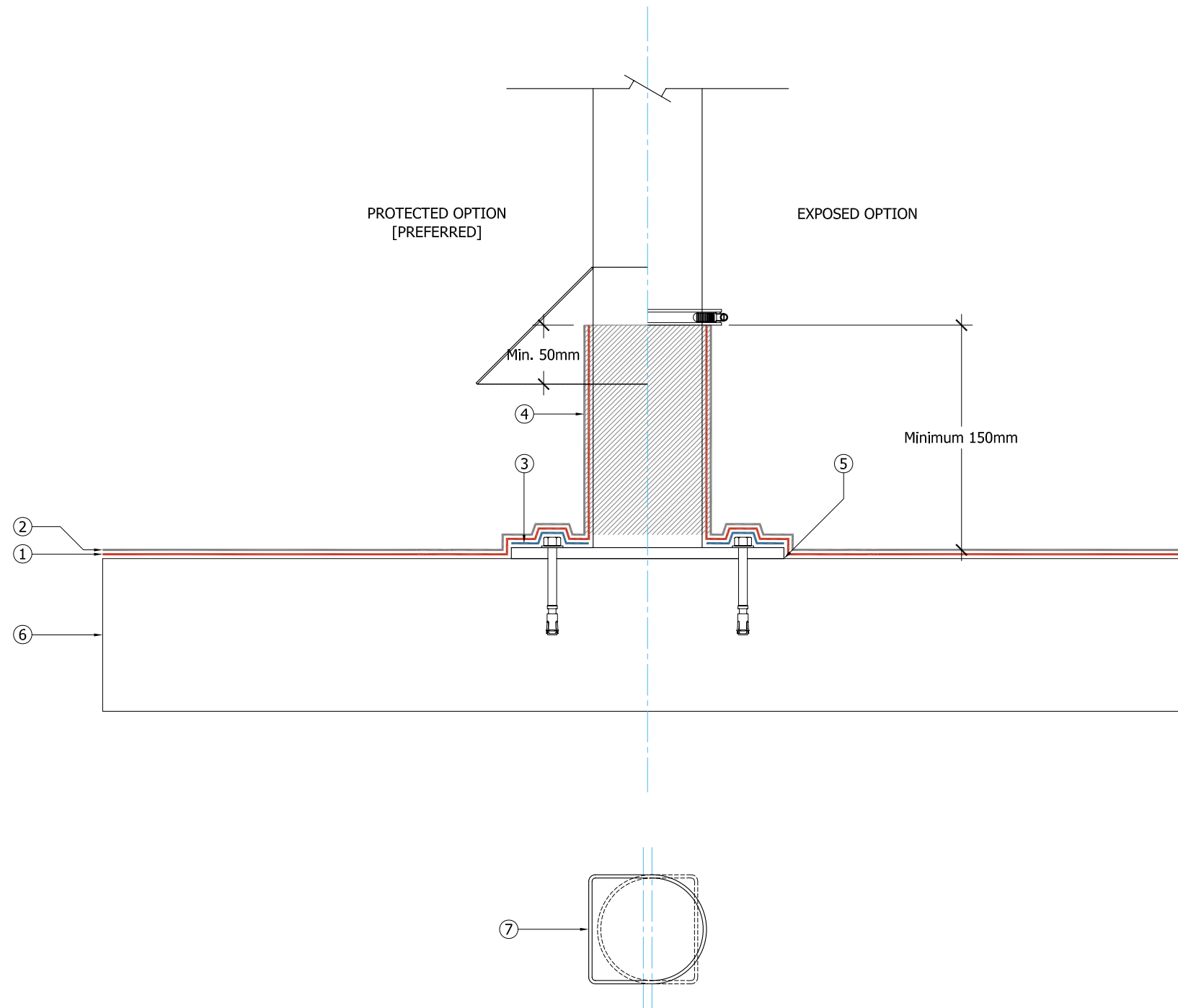


Key

- ① — Decothane Base Coat with embedded Reemat Premium GFM as per Sika Liquid Plastics Project Specification
- ② — Decothane Top Coat as per Sika Liquid Plastics Project Specification
- ③ — Sika Liquid Plastics Flexistrip applied to bolt heads
- ④ Fully reinforced Decothane Waterproofing System [as specified] dressed on to prepared and primed upstands in strict accordance with Sika Liquid Plastics Project Specification to finish ideally 150mm above Finished Roof Level [recommended in BS 6229:2003]; termination point should finish in a protected position beneath an integral cowl or similar
- ⑤ Perimeter of metal stanchion base plate sealed with a proprietary Polyurethane based sealant as required to effectively seal gaps from shims etc.,
Note: application of coating should follow a continuous surface without bridging any gaps
- ⑥ Substrate prepared in strict accordance with Sika Liquid Plastics Project Specification
- ⑦ Typical sections



Sika Liquid Plastics
 Sika House
 Miller Street
 Preston
 Lancashire PR1 1EA
 Telephone: 01772 259781
 Email: technical.customer.services@uk.sika.com
 Web: www.liquidplastics.co.uk

This drawing is solely intended to illustrate the correct application of Sika Liquid Plastics products and systems, it must be read in conjunction with the appropriate specification and current issue of relevant Technical Data Sheets. All elements bearing reference to structural and/or thermal design are shown indicatively and should not be used in whole or in part for any aspect of project design without consulting the relevant authorities.

For refurbishment projects, all aspects of the existing roof are deemed to be fully compliant with BS 6229:2003 [Code of Practice for Flat Roofs with Continuously Supported Coverings] or improved upon for instances where these standards are not met.

Site-specific details not covered by our range of Standard Details can be obtained by providing relevant information to the email address shown.

Project No:	
DWG No:	Revision:
Project:	
Drawing Title: Waterproofing Termination Detail to a typical plant stanchion	
Scale: NTS @ A3	Drawn:
Date:	

